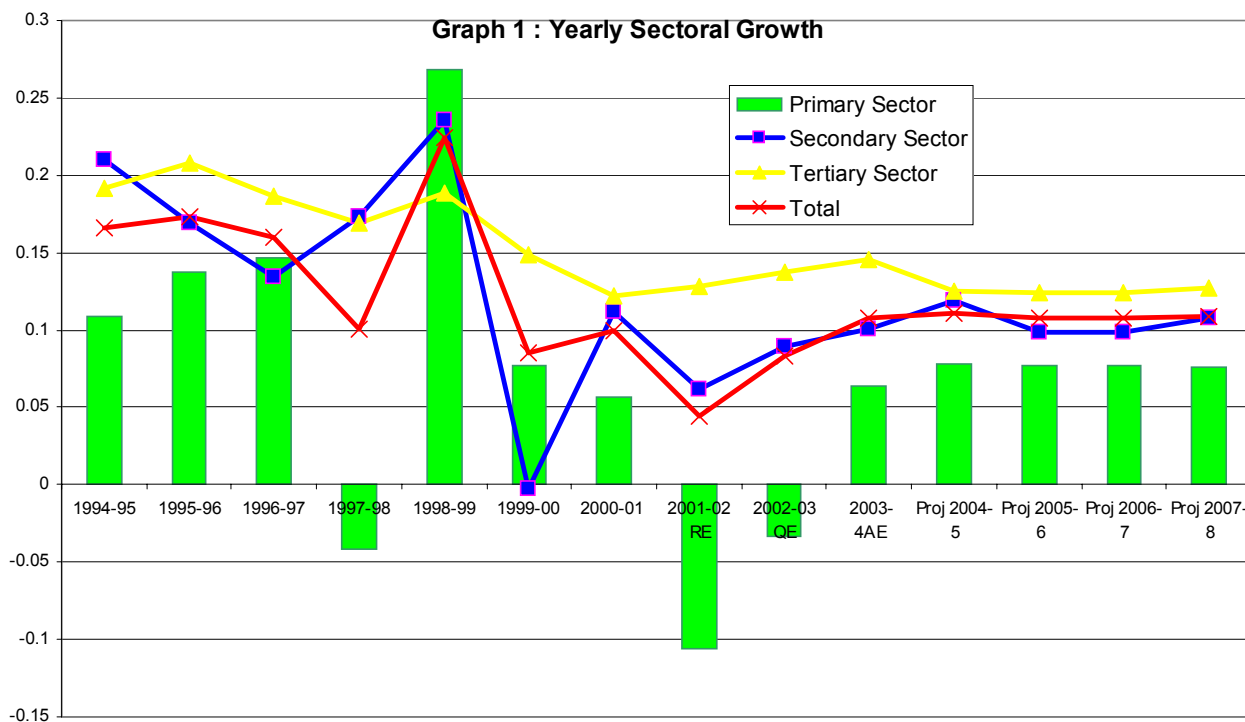
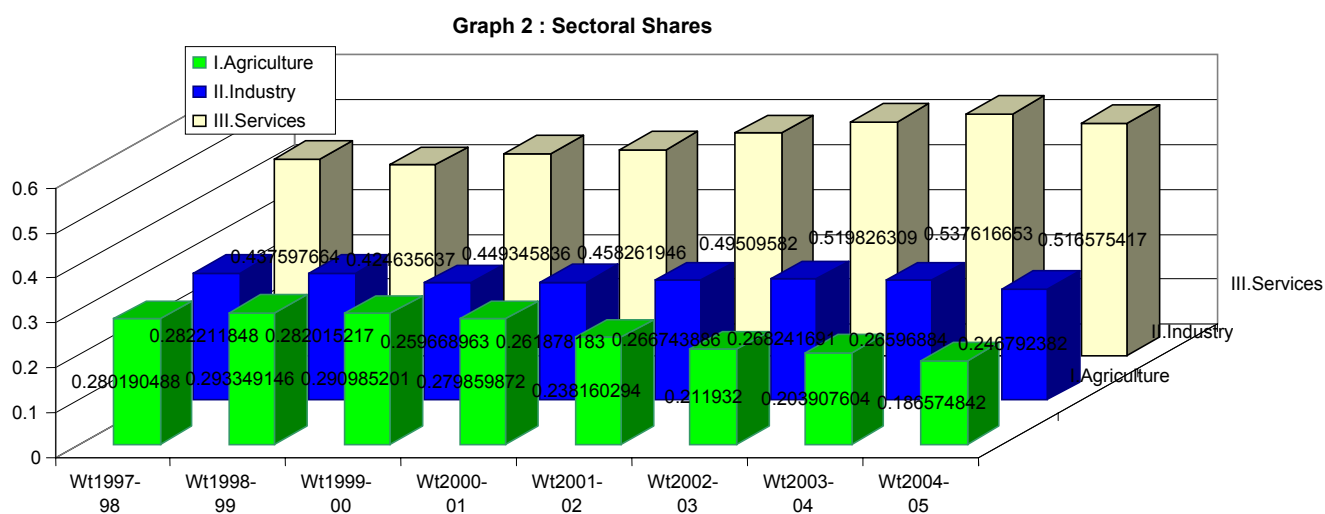


GRAPHS

GRAPH 1 : Sectoral GSDP Growth (1994-95 to 2007-08)

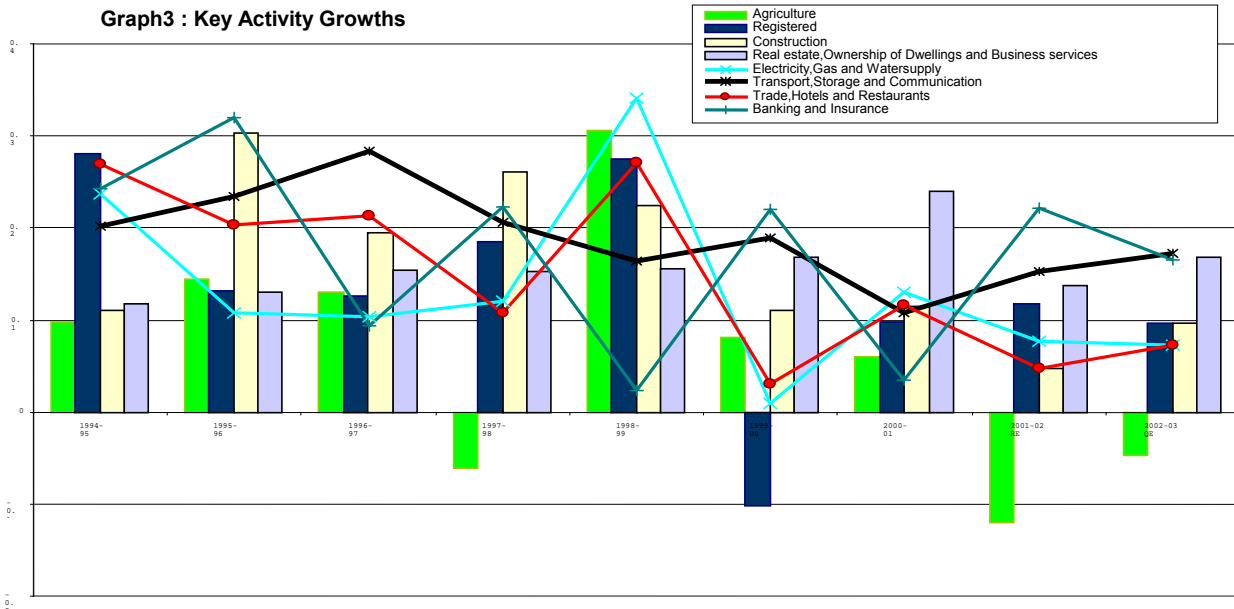


GRAPH 2 : Sectoral Shares of GSDP

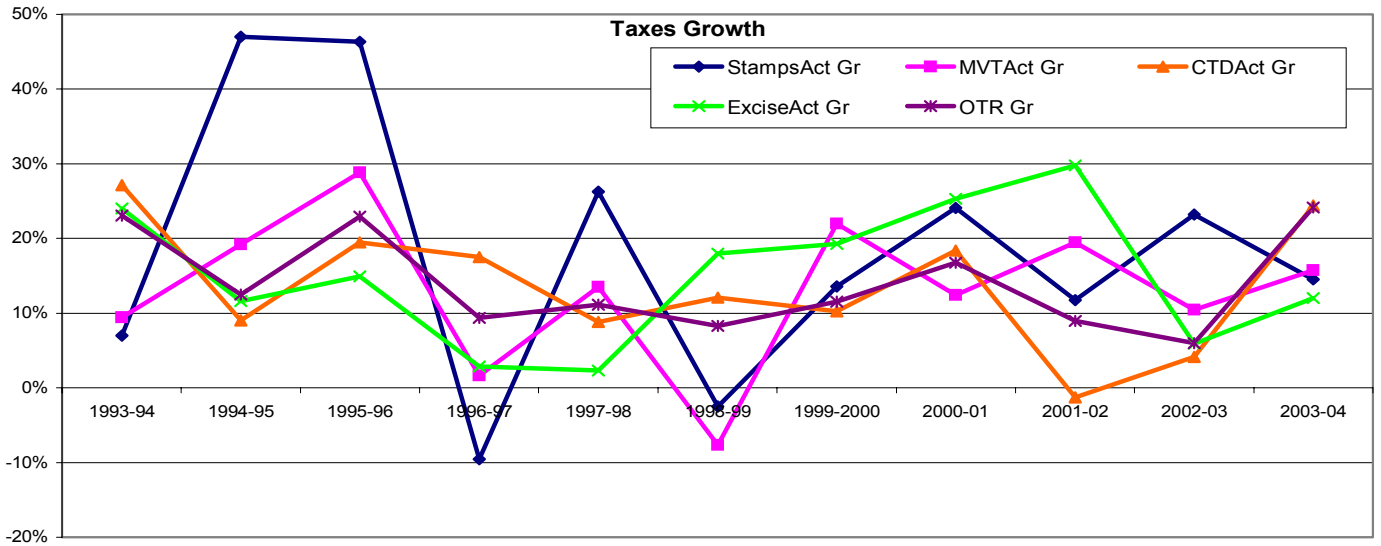


GRAPH 3 : Growth of Key Activities in GSDP

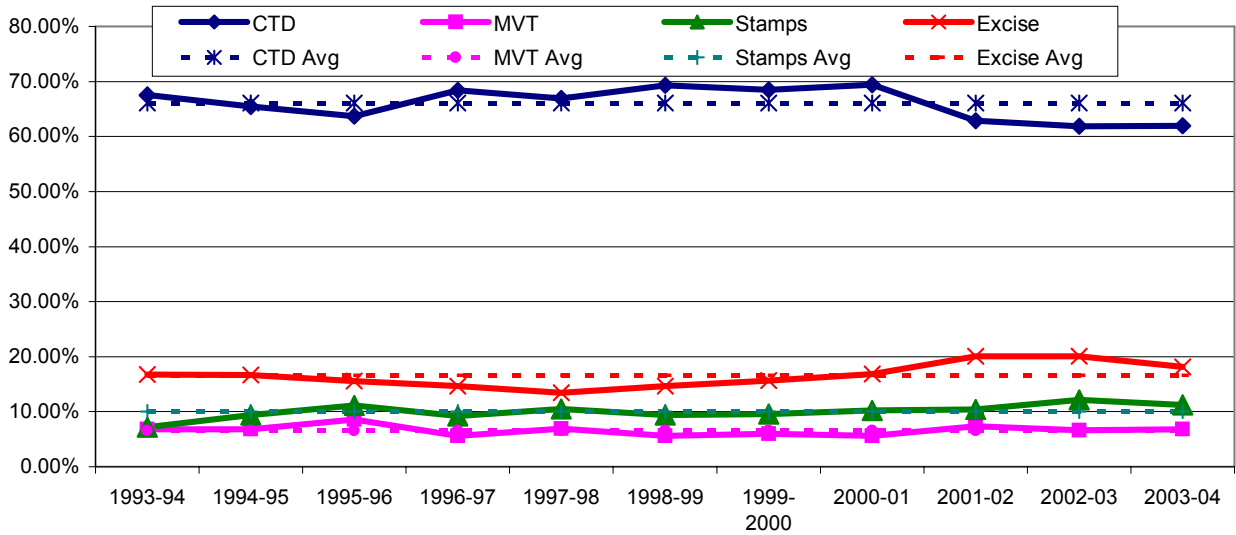
Graph3 : Key Activity Growths



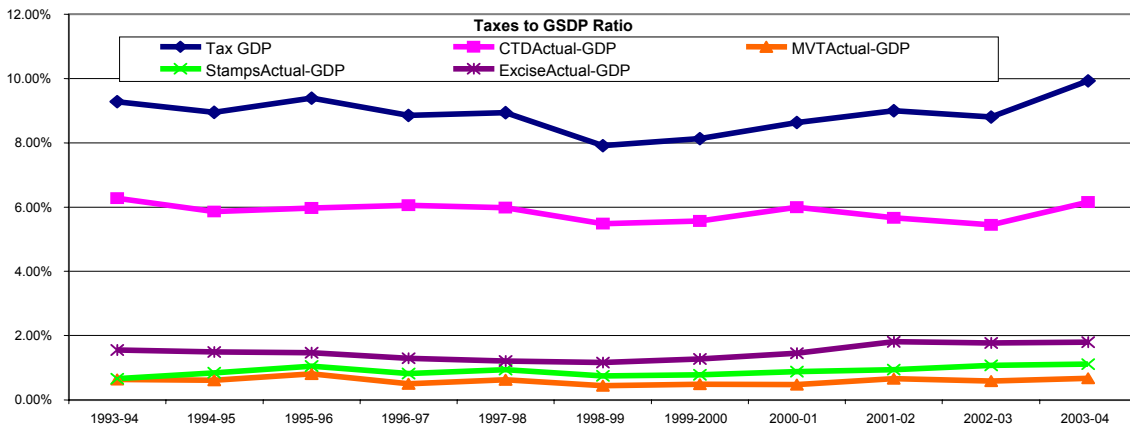
GRAPH 4 : Long Term Tax Growth



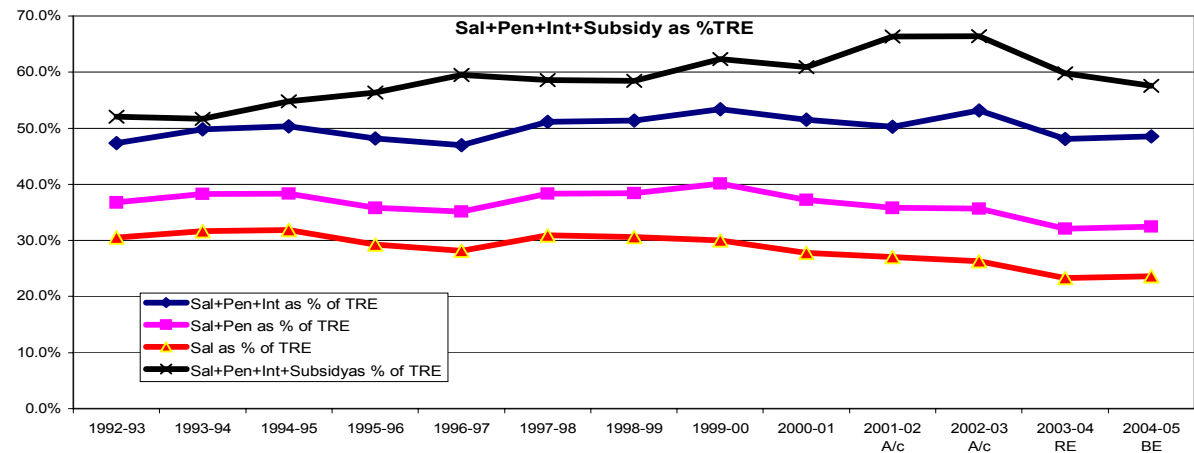
GRAPH 5(A) Share of Taxes in Own Tax Revenue



GRAPH 5(B): Tax-GSDP Ratio



GRAPH 6 : Salaries, Pensions, Interest & Subsidies as % of GSDP



GRAPH 7: Sectoral Government Guarantees (% to Total)

